



Edmund Rice - Networking WA

Volume 3 Issue 3

April 2010

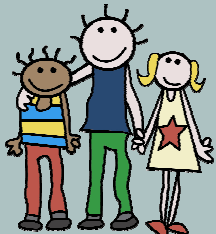
Special points of Interest:

- **Sundowner 2010 at CBC Fremantle & WA Wisdom Group Commissioning**
- **"NOW IS THE TIME" Danny Moore ERN RC Victoria**
- **A New Energy— Exploration of Different Forms of Commitment. Br Steve McLaughlin**
- **ERISJ –What's on in April 2010**
- **Edmund Rice Network Harmony Weekend May 14th—16th 2010**



Gathered around the campfire
at Harmony Weekend 2009

Coming soon :-
ERCKWA QUIZ NIGHT
18 June 2010



ERN SUNDOWNER 2010



The Performing Arts Centre at CBC Fremantle was the superb venue for this year's Sundowner. Guests from the Ed-



mund Rice Network gathered in celebration of the last twelve months and in anticipation of the year to come.

There was a plentiful supply of

delicious food and the generous assistance, not to mention the warmth of the welcome from the staff of CBC Fremantle, was really special.

The newly formed WA Wisdom Group was commissioned by Brother Steve McLaughlin, the



Director of Networking Communication and Development for the Oceania Province. Wisdom Groups are

being set up in all regions of Oceania and while being unique to their area, they will have the same core values.

This new initiative is a direct result of the 2008 Congregational Chapter held in Munnar, India and moved further forward by the 2008 Oceania Chapter in Brisbane. At both of these gatherings it became clear that the Brothers are seeking new ways to formally recognize that their lay co-workers, friends and companions in the broader Edmund Rice Network, play an increasingly vital role in bringing the Edmund Rice Charism to life in our schools, ministries and communities. In short, the Christian Brothers are seeking a new method by which they can empower and journey with all who are inspired by the Charism of Edmund – and more specifically, a process by which they can be in regular dialogue with significant representatives in each corner of the Edmund Rice Global Network. The theme for the Missioning was based on the Gospel of John, Chapter 15 "I am the vine and you are the branches" Br Steve called forward each member of the ERN Wisdom Group and invited several of the Brothers to present them with a small plant (herb) as a symbol of the Brothers entrusting the story to the Network.



and the .sharing of the wisdom with this group of people.

These plants symbolize

the goodness or the fruit already present in the network and act as a reminder of the growth that is yet to occur. With nourishment, support and connection to the true vine, this group is encouraged to grow new shoots and to reap a rich harvest in the name of Jesus and Edmund.

Each plant is also different, symbolizing the different stories, ideas and gifts that each person brings to the wisdom group.



Members of the group consist of: Gus Irdi-Irdi Legal (Chair); Steve Bowman-Edmund Rice Centre Mirrabooka; Donella Brown-Indigenous Ministry; Trevanna Cooper-CBC Fremantle; Gordon Dean-Trinity College; Richard Mavros-Formation Team Member; Chris Mousley-Edmund Rice Community; John Richards-Aquinas College; Sandro Sandri-CBC Fremantle; Catherine Tesoriero-Maternity leave from Trinity College; Br Bernard White-Vocations Ministry; Br Pat Kelly-Cluster Leader & Jill Parker-(Ex Officio).

Thanks to Mark Cocks and the ER Community for their help with the drinks and to Rob Henderson and all at CBC for their generosity, help and warm welcome.



“NOW IS THE TIME”



Danny Moore ERN Regional Coordinator Victoria

Eight years ago, the 2002 Christian Brothers' Rome Chapter named all those women and men bringing life to new and existing expressions of Edmund's charism—the *Edmund Rice Network*. The word *network* continues to prompt a range of reactions from within our Network, a likely reflection of the range of understandings of what it means to *be* Network. Variety is good. No single definition can capture all that our Network is or hopes to be. But have we really embraced the wisdom given to us at the 2002 Chapter? Perhaps now is the time.

Admittedly, in the years since that Chapter, we have learnt that if we focus too much on the Network construct, we risk losing sight of a far more important reality – the energy, good will and spirit that transcend the many and varied works we do through Edmund's inspiration – the mortar that holds us together. Consequently, the subtleties in meaning have seen us focus more recently on the language of *networking* rather than *network*.

The globalization of our planet has seen the art of networking flourish across all fields of human endeavour. But for what purpose do we network? Some network to meet their own needs. Others are more magnanimous in their outlook and recognise the mutual benefit of networking. For us in the Edmund Rice Network there must be a distinctly different motivation. As a network of people who *proclaim liberation and justice for all creation*, our questions of networking are not about me or even about you and me. Our question must surely be - how does networking enhance our mission to bring about liberation and justice for all life?

Imagine our potential as a liberating force in this world if this question was at the heart of our networking. This is the potential we are really yet to contemplate much less realise. Perhaps now is the time.

The 2008 Oceania Chapter called the Oceania Leadership Team to *determine suitable forums to engage the Edmund Rice Network before and at the time of the next Chapter*. 2010 is the first stage in a journey of engagement that will lead us to this critical time in our Network story. During July 2 – 4, representatives from newly formed ERN Wisdom Groups will gather in Brisbane. Our purpose will be to re-visit the wisdom of network and networking. A larger gathering is planned for 2011 and our journey will all the time be working towards the realisation of an authoritative gathering of ERN representatives at the time of the next Oceania Chapter.

Neither the Wisdom groups nor their representatives can hold all the wisdom, but they will be charged with creating an ongoing wisdom dialogue throughout our Network so that we are all growing ever closer towards our potential. Yes – now is the time.

A NEW ENERGY! Exploration of Different Forms of Commitment

The options for making formal commitment to a particular charism used to be largely limited to the commitment of religious life or perhaps to associates, third orders or affiliates. There are now other formal groupings of people in the Church who may be religious or lay, married or single, but all belong to a particular society inspired by a particular charism. There is also a vast range of people who have individually committed their lives in service inspired by particular charisms, and we have a huge number of such people in the various Edmund Rice ministries and enterprises. However it is to those who wish to explore in association with others, the making of some sort of formal commitment to the charism of Edmund Rice that the following is addressed.

The Oceania Province would like to facilitate the conversation among like-minded people interested in similar types of formal commitment to the charism of Edmund Rice. A number of such people have already made their names known to their local Edmund Rice Network Coordinators. It is envisaged that people who seem to be seeking something similar will be put in touch with one another forming “Focus Groups”. The purpose would be to see whether there can be developed some possible pathways that might respond to the yearnings in each person. These different Focus Groups might discuss such things as a Charter; the scope of commitment they are dreaming of; any daily prayer/ritual; any social involvement they may envisage, or what words there might be in a commitment statement. In short, they are asked to try to determine what they are calling into being, and why. There will be someone appointed as a Focus Group Coordinator who will facilitate the discussion in each of these groups.

After these initial conversations, it is planned to name a Commission. The Commission will receive the ideas of the different Focus Groups and see whether there are any emerging possibilities for pathways which might reflect the directions people are feeling the urge to explore. This Commission would be a resourcing and encouraging group, which would coordinate the continuing wider discussion among the various Focus Groups. It would assist in the establishment of any new formal grouping.

If you are interested in becoming part of a Focus Group to discuss with others a form of commitment to the Edmund Rice charism please contact your local ERN coordinator if you have not already done so. The coordinators are charged with gathering the names of such people and forming groups of people who seem to be searching for similar types of commitment.

So the steps planned are:-

People interested in exploring the making of a formal commitment to the Edmund Rice charism, contact their local ERN coordinator.

The ERN coordinators with the Focus Group Coordinator, facilitate the clustering of people seeking similar pathways, so that those people can continue their discussions.

The Focus Group Coordinator (yet to be named) contacts the different groups to see what assistance is required in furthering the conversation within the group.

A Commission (yet to be established) is established to receive reports from each of the Focus Groups and to promote sharing among the groups.

The Commission works with the various Focus Groups to identify a handful of possible new pathways to different types of commitment, which can then be developed, refined further and promoted among the ERN.

Please contact WA ERN coordinator Jill Parker: jcparker@edmundrice.org if you are interested in being part of a Focus Group

EDMUND RICE INSTITUTE FOR SOCIAL JUSTICE FREMANTLE



Why volunteer with us?

Reasons to become a trained ERISJ Volunteer include:

- achieve heightened awareness of Social Justice issues in order to become a valued Social Justice Volunteer worker;
- many positions we make available are in areas otherwise difficult to get involved in as an outsider;
- volunteering experience with us supports your progress in various fields of employment, and we offer Certificates and documented evidence of volunteer hours worked;
- Contact:- please email admin@erisj.org.au

WHAT'S ON IN APRIL & EARLY MAY 2010

2010 – Mainstreaming Nonviolence Retreats

This year the Mainstreaming Nonviolence and the Daily Practice of Peace five-day residential retreats will be held at Nathanael's Rest in Mundaring:

**Sunday evening April 25 - Friday April 30 and
Sunday evening November 28 - Friday Dec 3**

Each of these programs will be limited to eight participants. Any questions? Please contact Brendan McKeague, 0429 448 090 or email mckeague.brendan@gmail.com

Resilient Cities: Saving our Cities from Peak Oil and Climate Change Saturday, 1 May 2010 10am-3pm

This Intensive will assist participants to understand and plan hopeful, practical solutions to the climate change and peak oil crises that are effective for individuals, the community and public policy.

Learning Outcomes:-

Participants will conclude this interactive Intensive with an inspired, clear sense of:

- how such crises open possibilities for a new green economy and sustainable cities;
- approaches that governments at all levels can adopt to facilitate this transition;
- practical steps that each household and business can implement that will make a big difference;
- how environmental proposals do not work unless they make cities more liveable and equitable; and
- how the intersection of peak oil, climate change and the need to change the economy, provides a deeper theological and value crisis that needs to be addressed by us all.

Presenter: Peter Newman is Professor of Sustainability at Curtin University and a Board Member of Infrastructure Australia, which funds infrastructure for the long-term sustainability of Australian cities.



ERISJ Aboriginal Leadership Advisory Council



The ERISJ Aboriginal Leadership Program supports the identification, development and nurturing of personal, cultural and professional skills useful to current and emergent Aboriginal leaders. The Program's premise is the centrality of Aboriginal leadership to the wellbeing of Aboriginal and non-Aboriginal Australia. The fact that the median age of Aboriginal Australia is 21, when Australia overall is 37, underscores the fact that Aboriginal youths will likely need to be equipped with leadership skills earlier than their non-Aboriginal counterparts.

Further, the Program disseminates insightful Aboriginal skills and capacities not widely present within non-Aboriginal Australia, and vice-versa. In this and other respects, the Program hopes to contribute to the national Post-Reconciliation Dialogue.

The ERISJ Aboriginal Leadership Program Advisory Council is comprised of Aboriginal Australians who are eminent educators and leaders within Aboriginal Australia.

The ERISJ Aboriginal Leadership Program Advisory Council advises the ERISJ Director and Board on:-

- Aboriginal perspectives and delivery central to the ERISJ Aboriginal Leadership Program;
- the usefulness of identified Program objectives, content, methods and presenters;
- and promotion of the program in a culturally relevant form.

The Council's membership will be announced shortly.

Free online social justice course

The ERISJ website is the global host for 'Acting Justly' - the [Edmund Rice International](http://erisj.org.au) FREE online course to raise awareness about effective action for justice: <http://erisj.org.au/course/>

Jan Novotka – Awakening the Truth Tour
The Perth events for this tour have been cancelled



WELCOME TO ALL

*Relax in the peace of the
forest;
Experience your spiritual
connection to the land;
Drink in the colours;
the stillness,
and the silence.*

at
**CAMP KELLY
DWELLINGUP**

**COST: \$20 PER FAMILY
OR \$10 PER PERSON**

(Children's programme provided)



Toast marshmallows
on the Campfire

Contact:
Jill Parker or Chris Ward ERCM-
jcparker@edmundrice.org
christina.ward@westnet.com.au

***Thank you
to everyone who
sent information
in for this issue.
Please keep the
news coming in
for the next issue.
Blessings,
Jill***

Online link:
[Christianbrothers.com
.au/ernwa](http://Christianbrothers.com.au/ernwa)
With thanks to Br
Berkeley Fitzhardinge

Edmund Rice Network Harmony Weekend— Walking Beyond our Boundaries 14th—16th May 2010

***Join us for this inspiring journey that will leave its mark
on your mind and heart***

The position of Edmund Rice Network (ERN) Co-ordinator is to aid the Oceania Networking and Development team in maintaining contact with individuals associated with the Christian Brothers and the Edmund Rice Network in Western Australia; to keep them informed and to encourage participation in future endeavours of the Christian Brothers Oceania and associated entities. I can be contacted on mobile phone **0414 629 218** or as below.

Jill Parker Direct Line: 08 9365 2841

ERN Regional Co-ordinator WA.

JCParker@edmundrice.org

Westcourt

PO BOX 1129

Bentley DC WA 6983

